



SIERRA VISTA Total: 2688 sq. ft. / 249.72 m²

THE TIMBER BLOCK SYSTEM, ITS COMPONENTS AND INTELLECTUAL PROPERTIES ARE PROTECTED BY INTERNATIONAL PATENT AND PATENTED PENDING LAWS. ©2015 Timber Block Inc. The illustrations can differ from the actual model. Architectural works relative to Timber Block homes are subject to international copyright law. The simple fact of using or copying the plans of Timber Block Inc/Thermostructure inc. in whole or in part or to fabricate or build directly or indirectly a home based, in whole or in part, on plans, scale-models or model homes of the former, without the express consent of Thermostructure Inc. might constitute an infringement to international copyright laws.

TIMBERBLOCK

Engineered Homes for Better Living

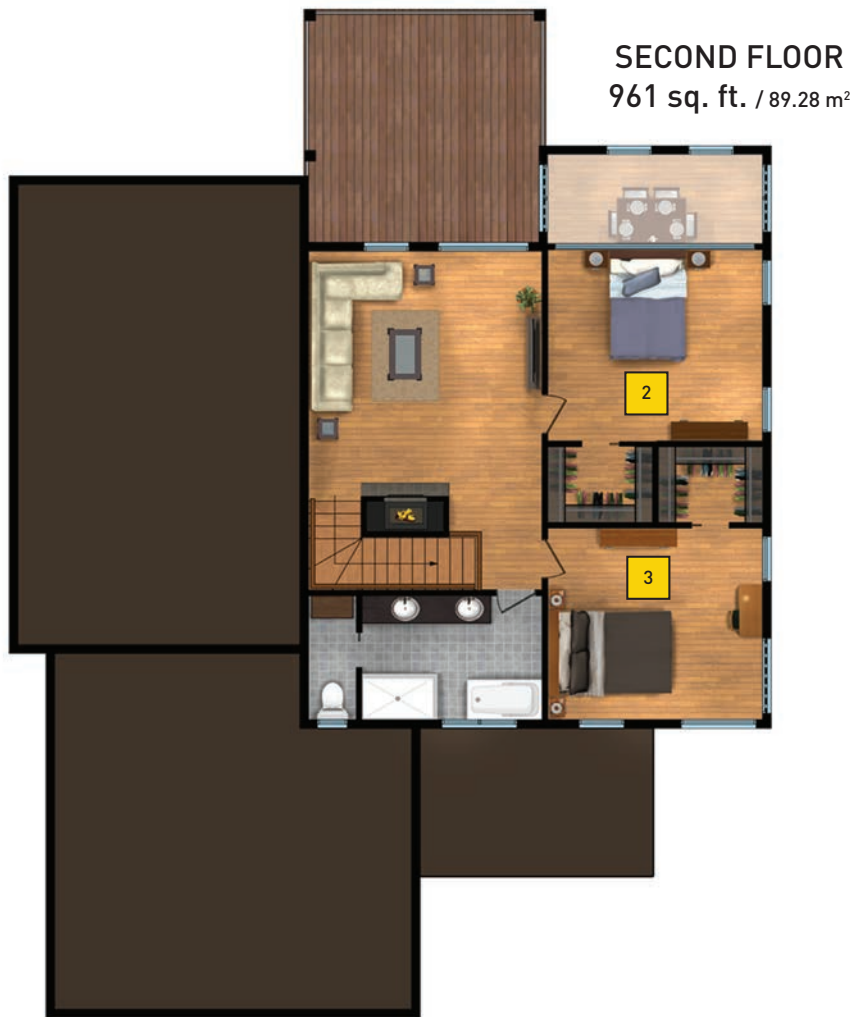
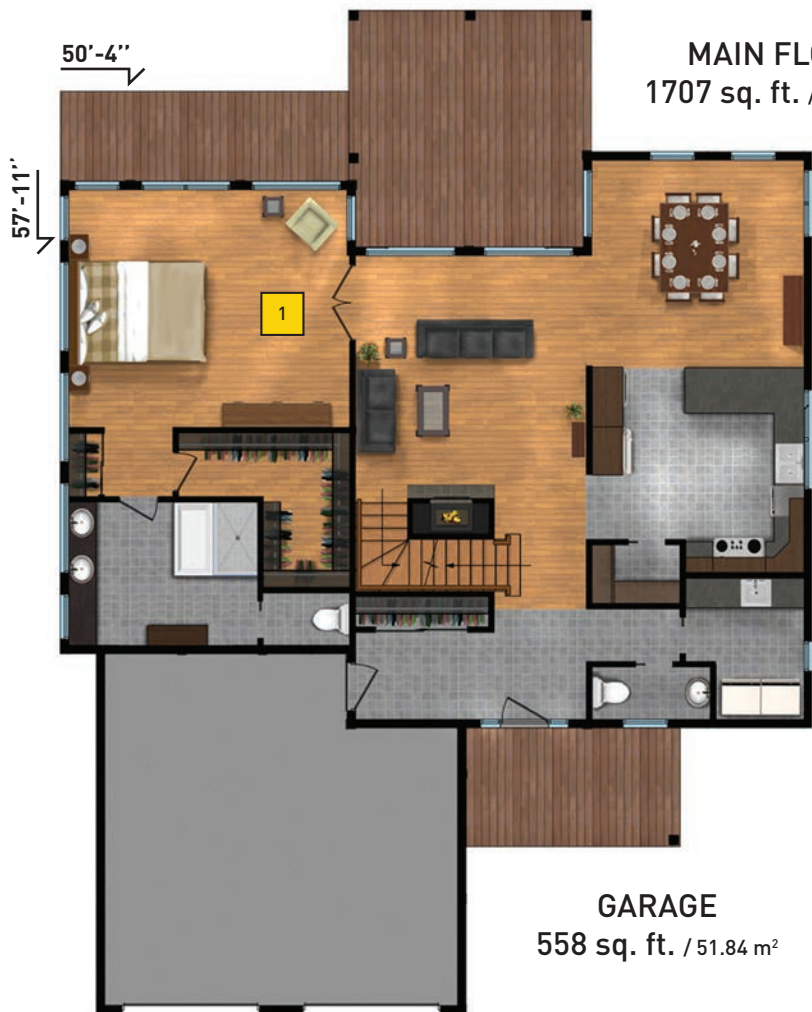
CONTEMPORARY

CONTEMPORARY

SIERRA VISTA

Room (floor)	Dimensions
Dining room	14'-4" X 13'-9" / 4,37m X 4,19m
Kitchen	14'-8" X 14'-1" / 4,47m X 4,29m
Living room	15'-6" X 17'-3" / 4,72m X 5,26m
Bedroom (1)	18'-8" X 16'-0" / 5,69m X 4,88m
Family room (2)	15'-7" X 17'-3" / 4,75m X 5,26m
Bedroom (2)	14'-4" X 12'-9" / 4,37m X 3,89m
Bedroom (3)	14'-4" X 12'-9" / 4,37m X 3,89m

TOTAL: 2268 sq. ft. / 249.72 m²



CONTEMPORARY SERIES

Custom floor plans available

www.timberblock.com / info@timberblock.com

1-866-929-5647 Connelly Springs, NC / 705-436-1924 Innisfil, ON / 450-431-7676 Mirabel, QC

