



STONEHAM - 2 Total: 2556 sq. ft. / 237.46 m²

THE TIMBER BLOCK SYSTEM, ITS COMPONENTS AND INTELLECTUAL PROPERTIES ARE PROTECTED BY INTERNATIONAL PATENT AND PATENTED PENDING LAWS. ©2015 Timber Block Inc. The illustrations can differ from the actual model. Architectural works relative to Timber Block homes are subject to international copyright law. The simple fact of using or copying the plans of Timber Block Inc./Thermostructure inc. in whole or in part or to fabricate or build directly or indirectly a home based, in whole or in part, on plans, scale-models or model homes of the former, without the express consent of Thermostructure Inc. might constitute an infringement to international copyright laws.

TIMBERBLOCK

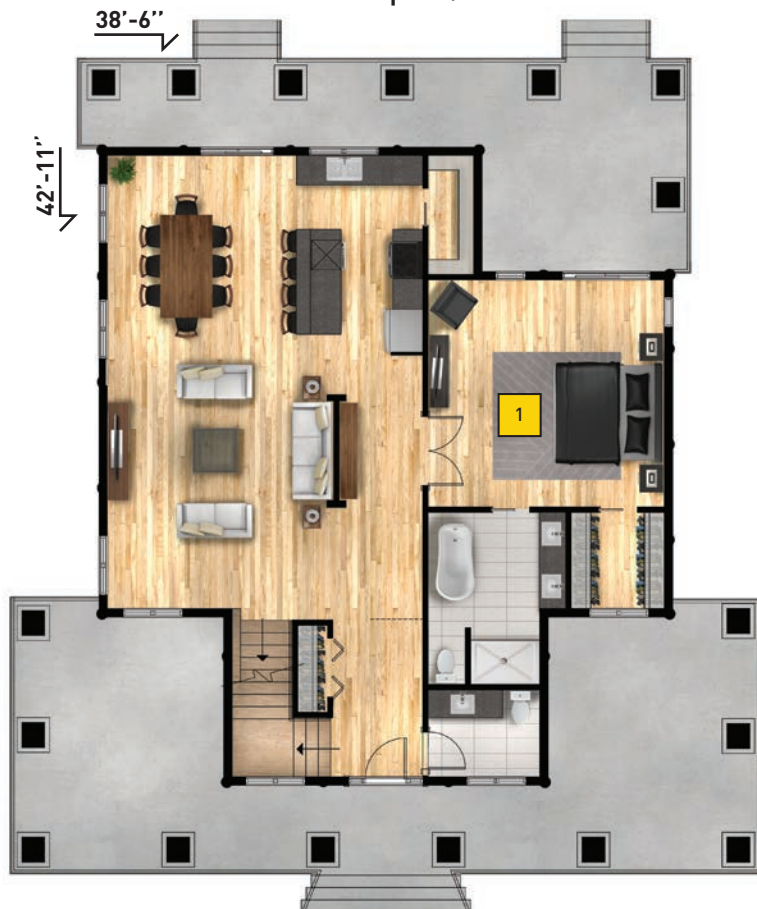
Engineered Homes for Better Living

STONEHAM -2

TOTAL: 2556 sq. ft. / 237.46 m²

Room (floor)	Dimensions
Dining room	12'-9" X 13'-3" / 3,89m X 4,04m
Kitchen	8'-6" X 13'-3" / 2,59m X 4,04m
Living room	15'-3" X 17'-5" / 4,65m X 5,31m
Bedroom (1)	15'-11" X 15'-4" / 4,85m X 4,67m
Bedroom (2)	12'-0" X 13'-9" / 3,66m X 4,19m
Bedroom (3)	12'-4" X 13'-9" / 3,76m X 4,19m
Family room (2)	16'-11" X 16'-6" / 5,16m X 5,03m
Bedroom (4)	11'-10" X 14'-5" / 3,61m X 4,39m

MAIN FLOOR
1352 sq. ft. / 125.61 m²



SECOND FLOOR
1204 sq. ft. / 111.86 m²



CRAFTSMAN SERIES

Custom floor plans available

www.timberblock.com / info@timberblock.com

1-866-929-5647 Connelly Springs, NC / 705-436-1924 Innisfil, ON / 450-431-7676 Mirabel, QC

