



DENALI Total: 2712 sq. ft. / 251.95 m²

THE TIMBER BLOCK SYSTEM, ITS COMPONENTS AND INTELLECTUAL PROPERTIES ARE PROTECTED BY INTERNATIONAL PATENT AND PATENTED PENDING LAWS. ©2015 Timber Block Inc. The illustrations can differ from the actual model. Architectural works relative to Timber Block homes are subject to international copyright law. The simple fact of using or copying the plans of Timber Block Inc./Thermostructure inc. in whole or in part or to fabricate or build directly or indirectly a home based, in whole or in part, on plans, scale-models or model homes of the former, without the express consent of Thermostructure Inc. might constitute an infringement to international copyright laws.

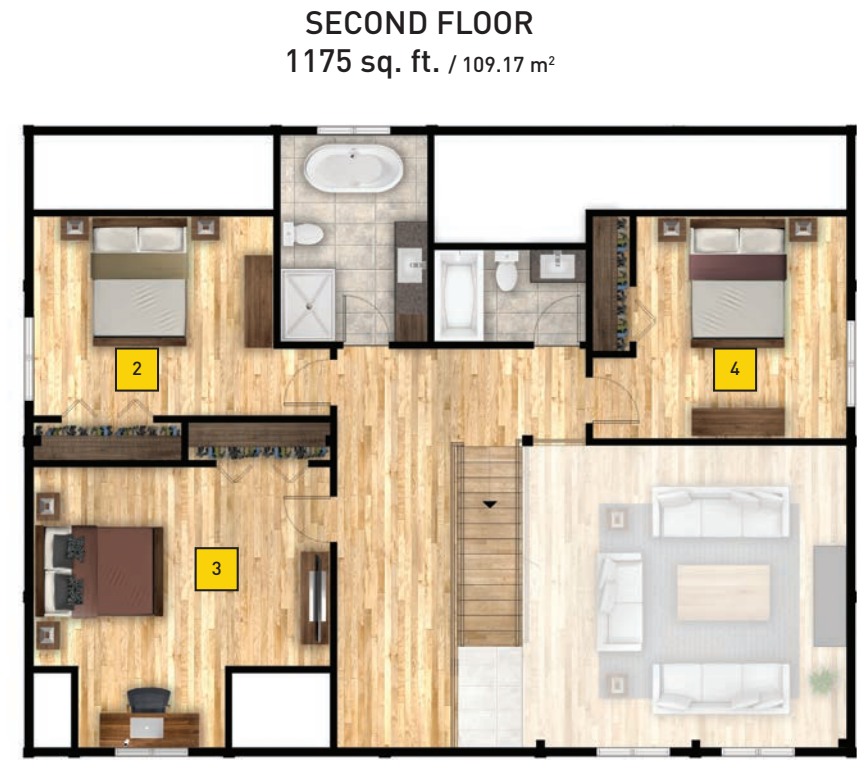
TIMBERBLOCK

Engineered Homes for Better Living

DENALI

TOTAL: 2712 sq. ft. / 251.95 m²

Room (floor)	Dimensions
Dining room	12'-0" X 11'-10" / 3,66m X 3,61m
Kitchen	16'-5" X 14'-2" / 5,00m X 4,32m
Living room	17'-8" X 19'-1" / 5,39m X 5,82m
Bedroom (1)	16'-4" X 16'-5" / 4,98m X 5,00m
Bedroom (2)	13'-1" X 10'-10" / 3,99m X 3,30m
Bedroom (3)	16'-2" X 10'-10" / 4,93m X 3,30m
Bedroom (4)	13'-10" X 12'-2" / 4,22m X 3,71m



CRAFTSMAN SERIES

Custom floor plans available

www.timberblock.com / info@timberblock.com

1-866-929-5647 Connelly Springs, NC / 705-436-1924 Innisfil, ON / 450-431-7676 Mirabel, QC

