



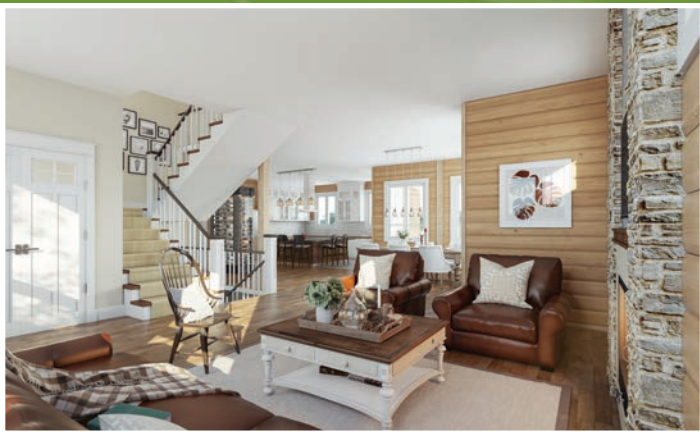
EVEREST Total: 2213 sq. ft. / 205.59 m²

THE TIMBER BLOCK SYSTEM, ITS COMPONENTS AND INTELLECTUAL PROPERTIES ARE PROTECTED BY INTERNATIONAL PATENT AND PATENTED PENDING LAWS. ©2015 Timber Block Inc. The illustrations can differ from the actual model. Architectural works relative to Timber Block homes are subject to international copyright law. The simple fact of using or copying the plans of Timber Block Inc./Thermostructure inc. in whole or in part or to fabricate or build directly or indirectly a home based, in whole or in part, on plans, scale-models or model homes of the former, without the express consent of Thermostructure Inc. might constitute an infringement to international copyright laws.

TIMBERBLOCK

Engineered Homes for Better Living

CRAFTSMAN



EVEREST

TOTAL: 2213 sq. ft. / 205.59 m²

Room (floor)	Dimensions
Dining room	11'-6" X 12'-8" / 3,51m X 3,86m
Breakfast nook	9'-2" X 12'-4" / 2,79m X 3,76m
Kitchen	15'-5" X 17'-4" / 4,70m X 5,28m
Living room	16'-6" X 15'-3" / 5,03m X 4,65m
Bedroom (1)	14'-3" X 12'-3" / 4,34m X 3,73m
Bedroom (2)	10'-3" X 15'-4" / 3,12m X 4,67m
Bedroom (3)	10'-11" X 15'-3" / 3,33m X 4,65m

MAIN FLOOR
1183 sq. ft. / 109.91 m²

GARAGE
522 sq. ft. / 48.50 m²

SECOND FLOOR
1030 sq. ft. / 95.70 m²



CRAFTSMAN SERIES

Custom floor plans available

www.timberblock.com / info@timberblock.com

1-866-929-5647 Connelly Springs, NC / 705-436-1924 Innisfil, ON / 450-431-7676 Mirabel, QC

